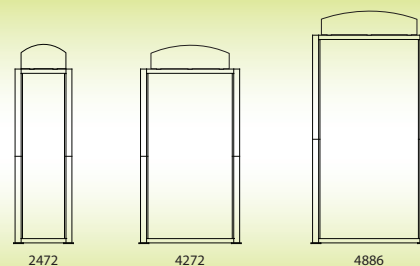


# AURA™

L I G H T B O X E S

Freestanding Double-sided Backlit Display



AURA™ is a great backlit solution for any environment.

Stable and stylish free-standing aluminum extrusion frame fits in perfectly with any existing display. Add one or multiple AURA™ standing lightboxes to 10x10, 10x20 or island trade show spaces. The AURA™ is perfect for permanent installations and portable enough for easy transport in trade show applications. The round sides of this vertical frame have a far more finished and purposeful shape than typical exposed frames. Universal appeal of the frame is eclipsed by the stunning double-sided backlit fabric graphics. The brilliance of Trifab dye-sublimated graphics is second to none. The deep saturation and expanded pigment range of this process and material combo brings your image to life. Backlighting from the AURA™ lightbox brings out the brilliant color and fine detail of your high-quality images. Photos, text and colorful design elements all benefit from dye-sublimated backlit Trifab graphics. The optional rigid graphic header can be printed with a full image on both sides. The header makes a great topper that enhances your message. Create remarkable displays within 10', 20', inlines or larger island displays.

Easy change-out of the fabric, so easy that you could have a new message every day of the show! SEG (silicone edge graphics) means message updates ship to your destination in an envelope.

AURA™ sets-up in minutes and requires no special installation crews. Shipping, set-up and tear down in trade show situations will leave you asking how you ever found the time to work with outdated cumbersome, heavy displays systems. More than just a lightbox - AURA truly is a full functioning trade show display!

#### Benefits

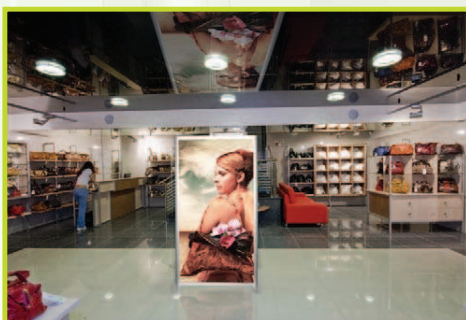
- Super fast, super easy graphic change-out
- Lower shipping cost
- Permanent or portable
- No labor cost; quick set-up/breakdown
- Style is universally appealing - goes with anything
- Backwall or two way traffic message carrier
- Add to any existing Tradeshow display

#### Features

- Lightweight aluminum frame
- Backlit SEG dye-sublimated fabric graphic provide amazing image "pop"
- Rigid double-sided header further enhances message
- Stylish rounded vertical sides
- Double-sided - capture attention of two-way traffic
- Internal lighting system
- Three stock sizes; custom sizes available



AURA™ 4886





AURA™ 2472

\* header option shown

#### AURA™ 2472

Frame  
Graphics(2)  
Sintra Header(double-sided) optional  
Kit Specs:  
Frame Size: 24" x 72"  
Frame Packed: 48.25" x 7.5"d x 24.75"d  
Graphic Final Size: 19.9235" x 69.3125"  
Graphic Live Area: 18.9375" x 68.25"  
Header Size: 18" x 10"  
Total Kit Weight: 56lbs. in carton / 71lbs. in optional case



AURA™ 4272

\* header option shown

#### AURA™ 4272

Frame  
Graphics(2)  
Sintra Header(double-sided) optional  
Kit Specs:  
Frame Size: 42" x 72"  
Frame Packed: 48.25" x 7.5"d x 24.75"d  
Graphic Final Size: 36.9375" x 69.3124"  
Graphic Live Area: 35.875" x 68.25"  
Header Size: 32" x 10"  
Total Kit Weight: 60lbs. in carton / 75lbs. in optional case



AURA™ 4886

\* header option shown

#### AURA™ 4886

Frame  
Graphics(2)  
Sintra Header(double-sided) optional  
Kit Specs:  
Frame Size: 48" x 86"  
Frame Packed: 48.25" x 7.5"d x 24.75"d  
Graphic Final Size: 44.0485" x 83.2985"  
Graphic Live Area: 44.0625" x 82.3125"  
Header Size: 39.11" x 10"  
Total Kit Weight: 66lbs. in carton / 81lbs. in optional case

Great for Tradeshows, Events or any of these other applications:

- Retail
- Hospitals
- Event signage
- Space definition
- Casinos
- Banks
- Corporate environments
- Universities
- Anywhere a permanent or temporary double-sided backlit display is needed