

Panoramic Frame

Component - Pano_Wall_20_B

Estimate detail

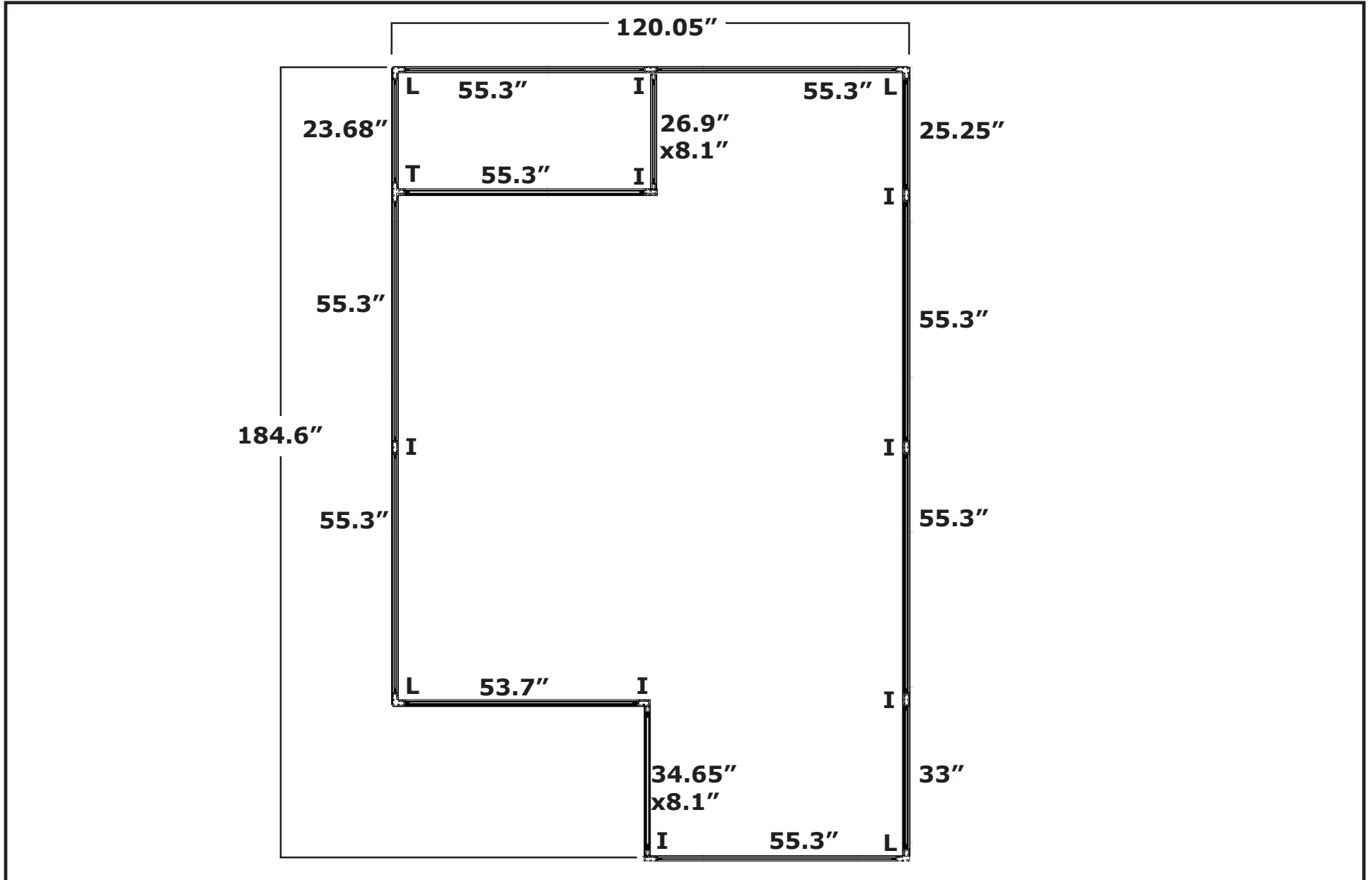
PanoEst_Room_B

Estimate

04/08/11

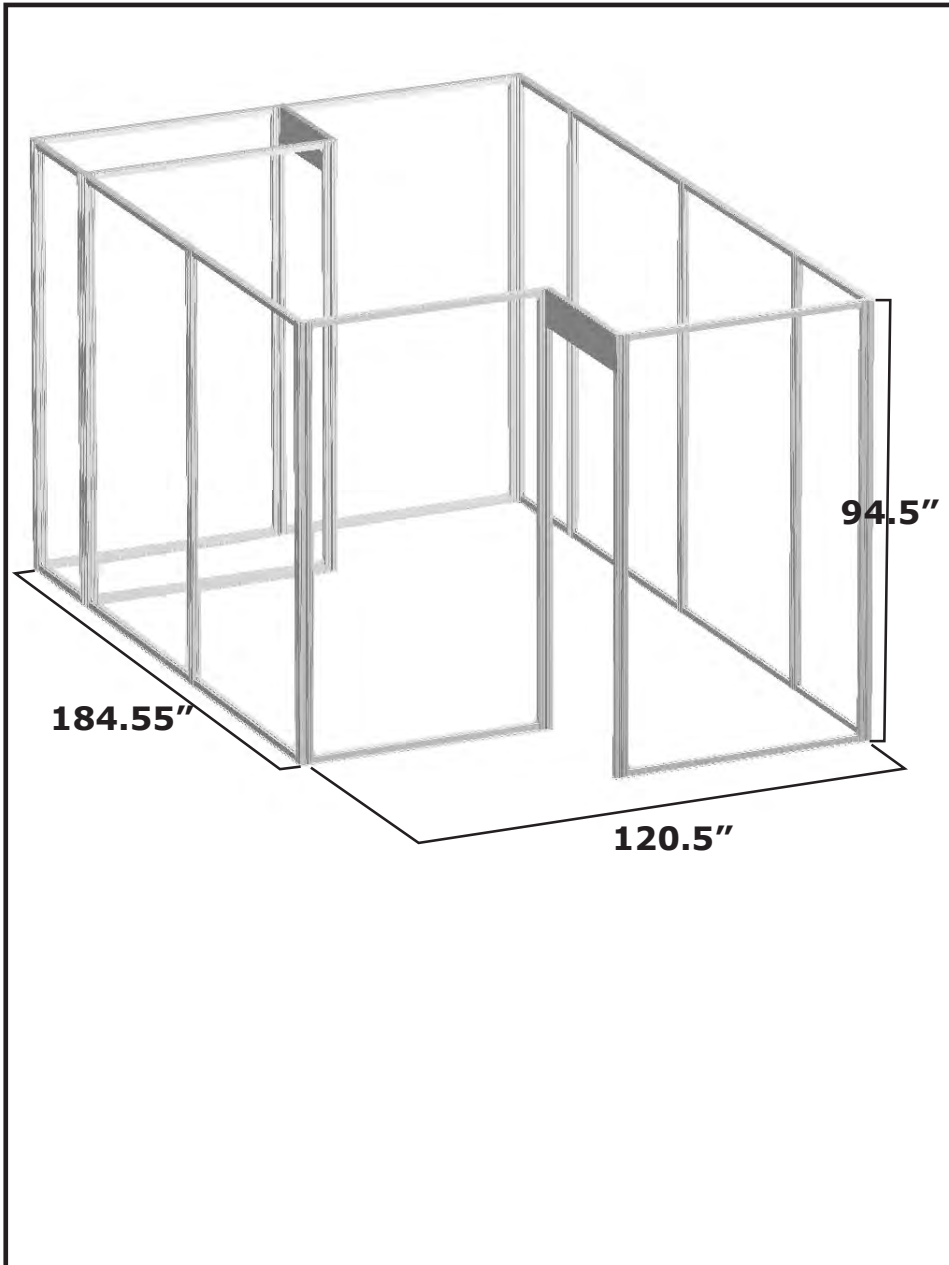
W:120.05" D:184.55" H:94.5"

Part Name	Part Dimension	Height in inches	Quantity	Linear foot totals	
Pano_L_Frame	80x80mm/3.15x3.15	Total # of pcs	4	Total LF 31.3333	
		94	4		31.3333
Pano_T_Frame	40x80mm/1.57x3.15	Total # of pcs	1	Total LF 7.8333	
		94	1		7.8333
Pano_I_Frame	40x80mm/1.57x3.15	Total # of pcs	8	Total LF 62.6667	
		94	8		62.6667
Pano_F - Top	40mmx40mm/1.57"x1.57	Total # of pcs	12	Total LF 48.1667	
		55.3	8		36.8667
		25.2	1		2.1
		33	1		2.75
		53.7	1		4.475
		23.7	1		1.975
Pano_F - Bottom	40mmx40mm/1.57"x1.57	Total # of pcs	12	Total LF 48.1667	
		55.3	8		36.8667
		25.2	1		2.1
		33	1		2.75
		53.7	1		4.475
		23.7	1		1.975
Pano_Header 1	40mmx40mm/1.57"x1.57	Total # of pcs	4	Total LF 11.6167	
		34.65	2		5.775
		8.15	2		1.3583
Pano_Header 2	40mmx40mm/1.57"x1.57	Total # of pcs	4	Total LF 7.2	
		26.9	2		4.4833
		8.15	2		1.3583
Total Graphic Square Foot Area		835.10	1		
Total Header Graphic Area		16.12	1		

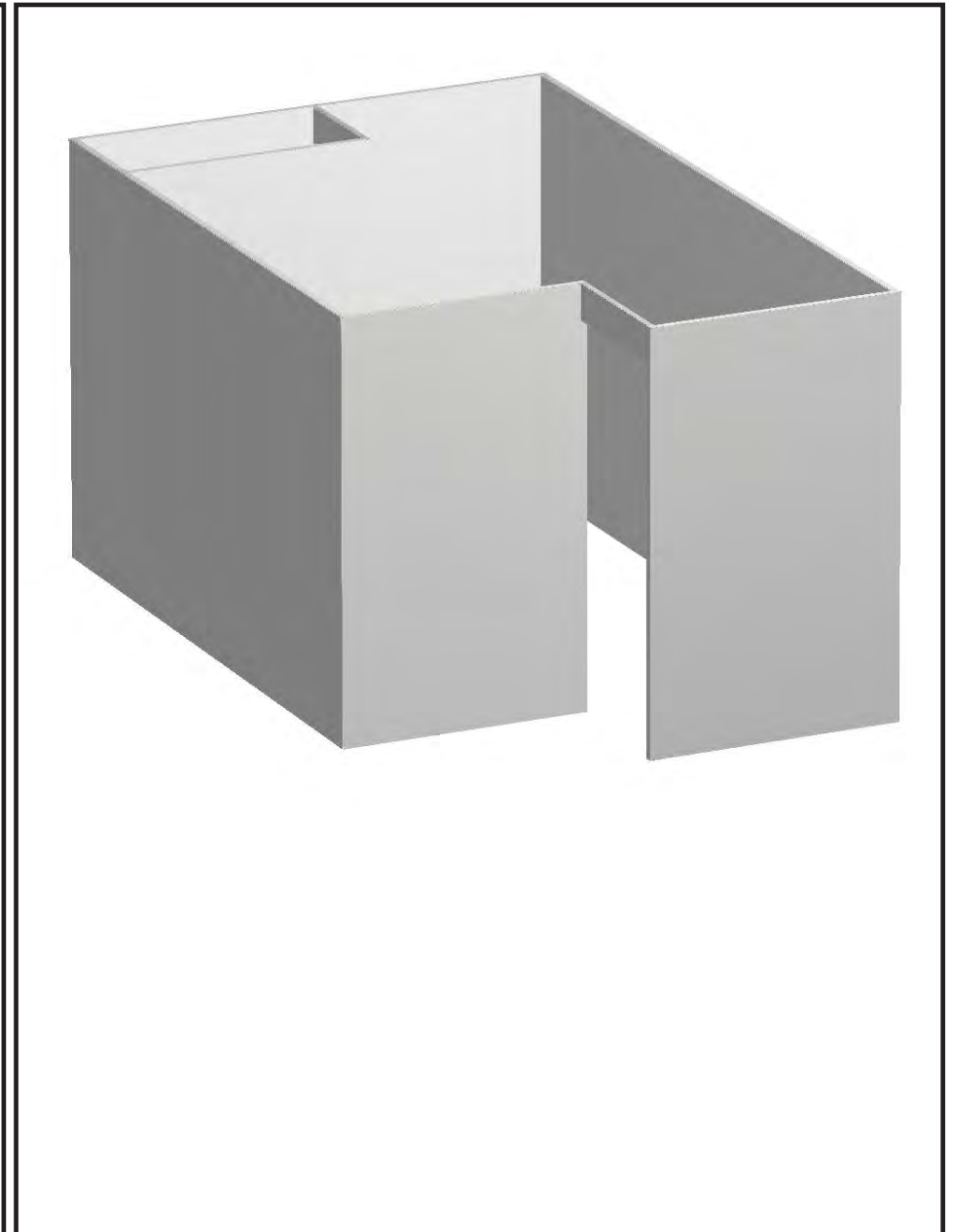


Plan View

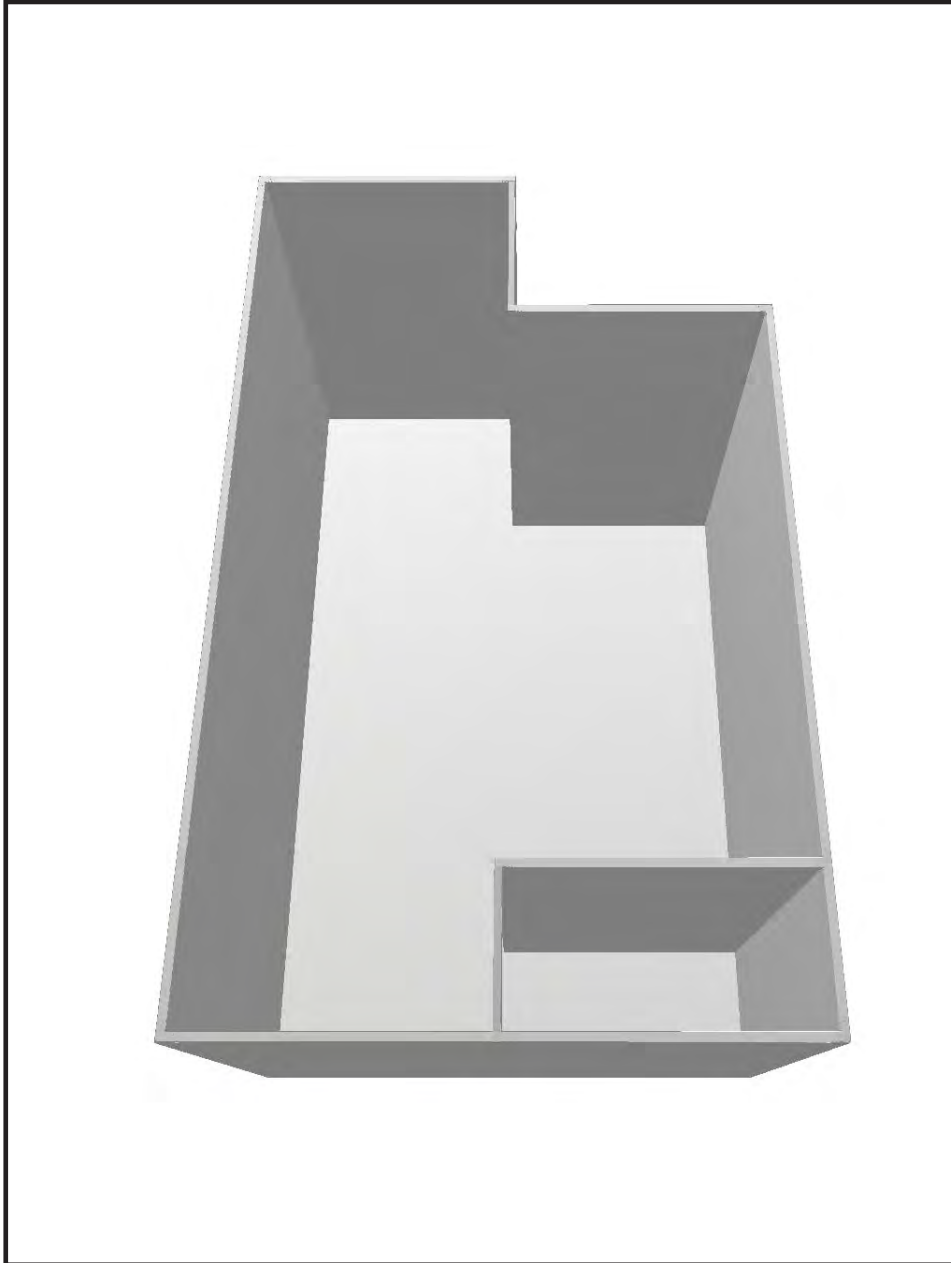
Vertical Extrusion = 94"



ISO frame view



ISO frame w/ fpo view



ISO frame view



ISO frame w/ fpo view