

Panoramic Frame

Component - Pano_Wall_20_D

Estimate detail

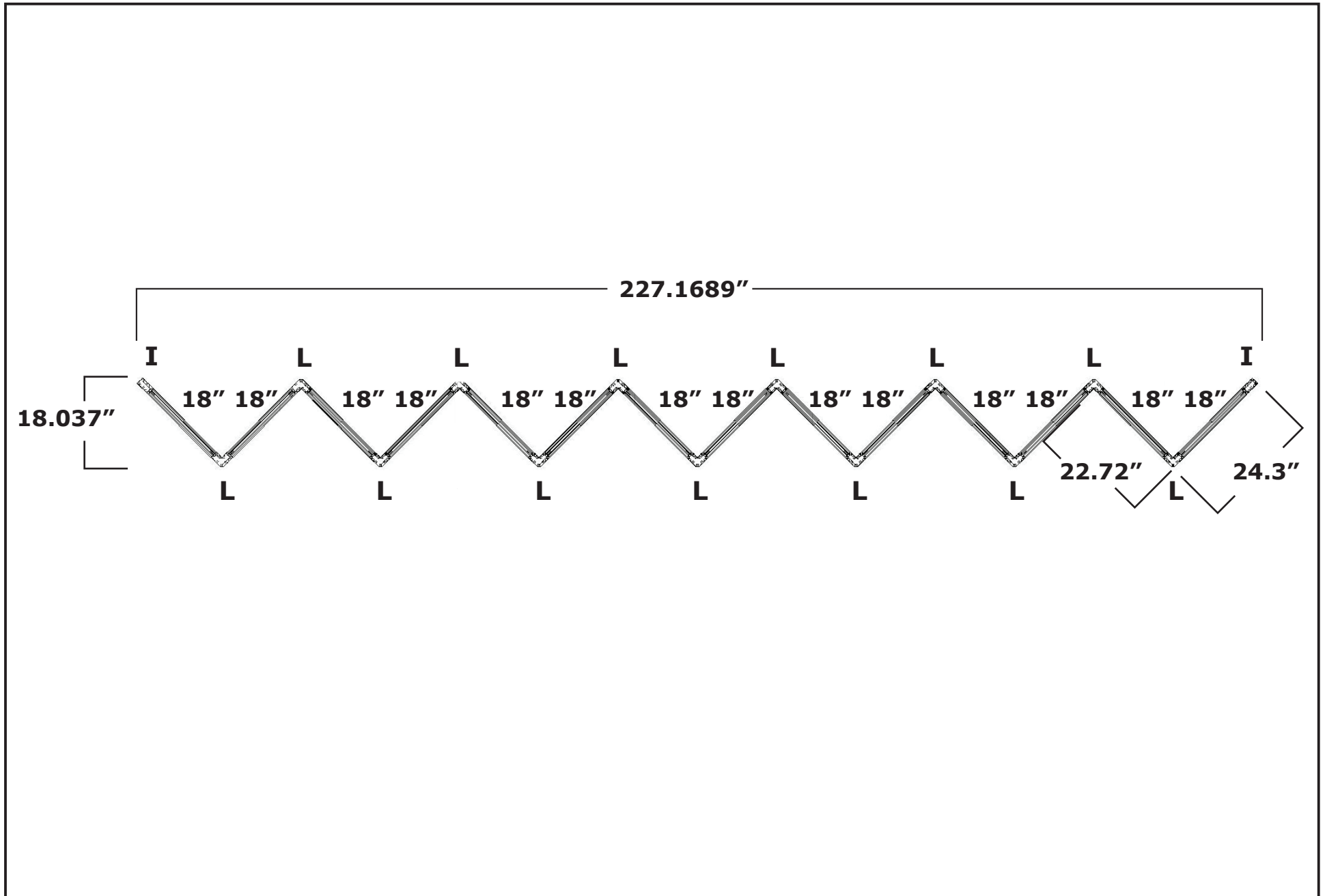
PanoEst_Wall_20_D

Estimate

04/08/11

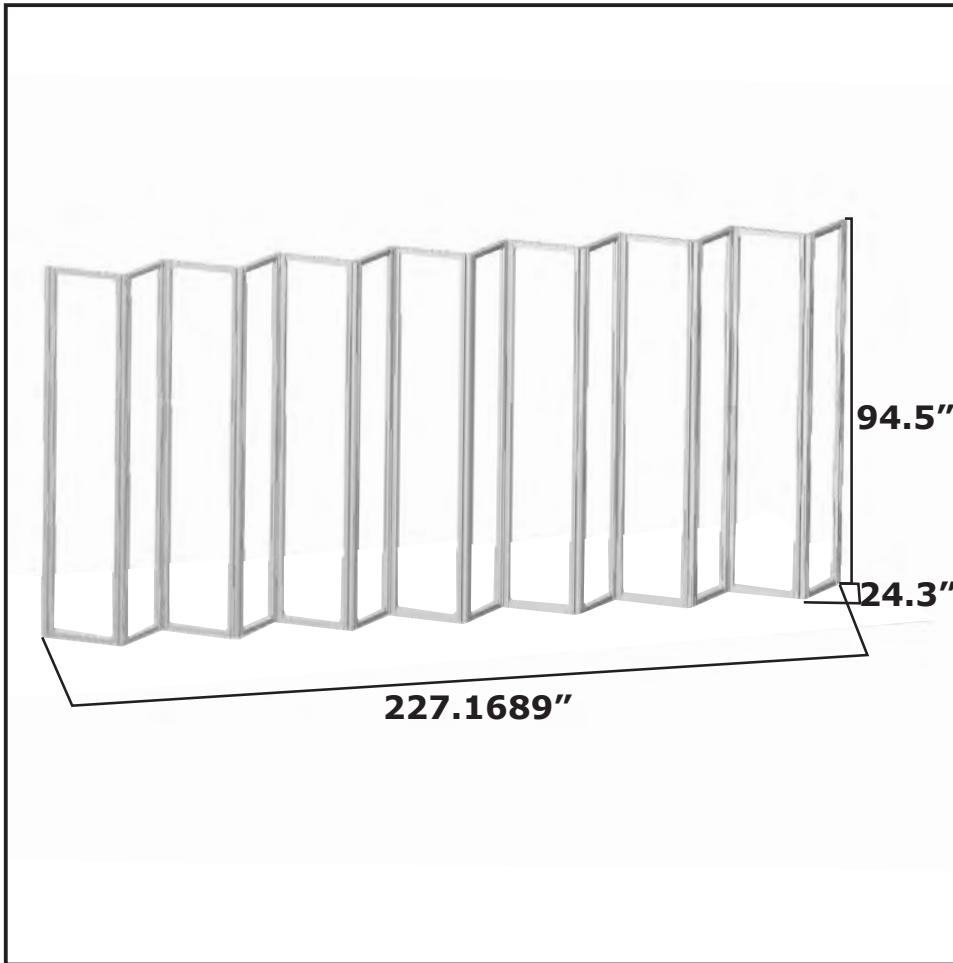
W:235.75" D:63.17" H:94.5"

Part Name	Part Dimension	Height in inches	Quantity	Linear foot totals
Pano_L_Frame	80x80mm/3.15x3.15	Total # of pcs	13	Total LF 101.8333
		94	13	101.8333
Pano_I_Frame	40x80mm/1.57x3.15	Total # of pcs	2	Total LF 15.6667
		94	2	15.6667
		Length in inches	Quantity	
Pano_F - Top	40mmx40mm/1.57"x1.57	Total # of pcs	14	Total LF 21
		18	14	21
Pano_F - Bottom	40mmx40mm/1.57"x1.57	Total # of pcs	14	Total LF 21
		18	14	21
Total Graphic Square Foot Area		249.37	1	

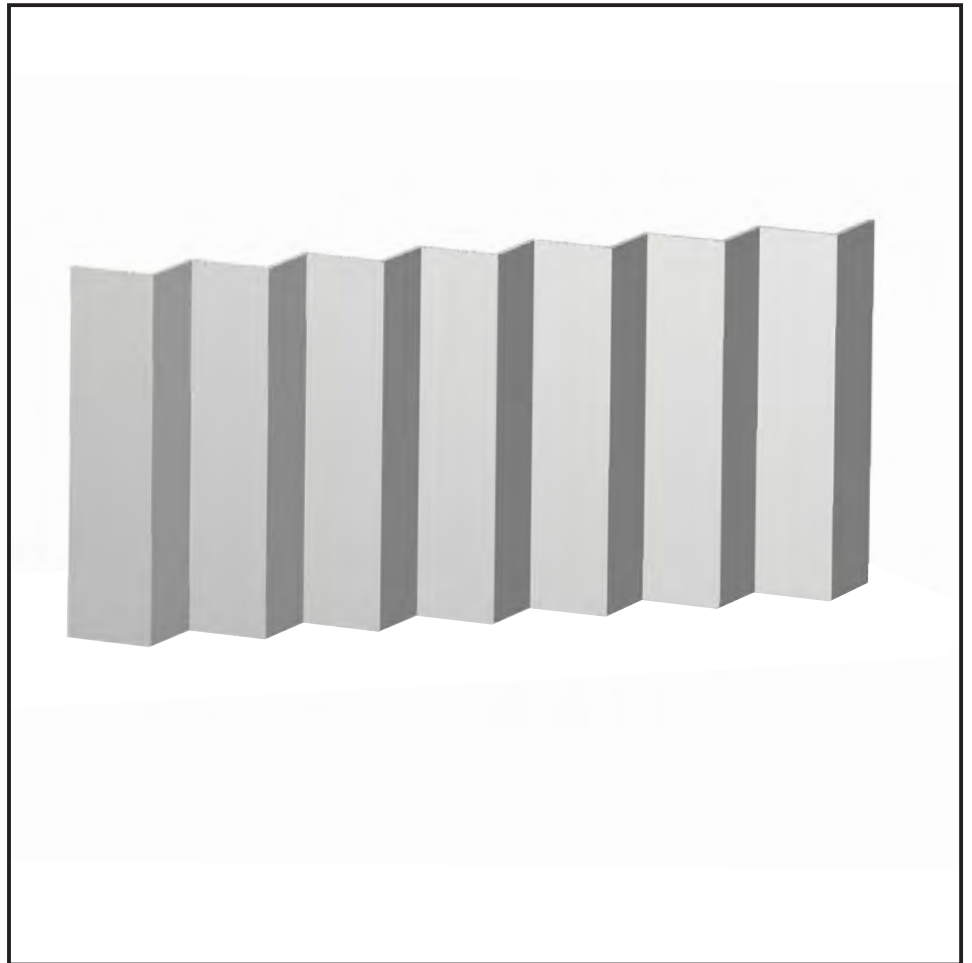


Plan View

Vertical Extrusion = 94"



ISO frame view



ISO frame w/ fpo view